

# Speech Activity Update

## NEW FOR THE 2021-22 CONTEST SEASON

- \* Speech areas have been adjusted this year to cut down on the number of entries/schools in attendance. We are hoping that this adjustment will help make conducting an in-person contest more manageable. Please consider hosting a contest this upcoming Fall. Information regarding any mitigations will be posted as we get closer to the new school year.
- \* The admission charge for Speech Contests will be \$2.00 for K-8 students and senior citizens and \$3.00 for adults. Please make sure that your parents and audience members are aware of this charge. Additionally, please share that admission money is used by the host to offset the expense of conducting contest.
- \* Please keep in mind that individual contestants may not perform the same selection in multiple events or in more than one IESA state contest. Schools are encouraged to limit the number of individuals, duets, and small groups using the same selection.
- \* Participating schools should communicate to their hosts as early as possible any changes to their contest entries. This would include letting their host know if they are using "empty" or blank entry spots.
- \* Remember that staging is included as an adjudication criteria for all events. Judges and coaches should keep these questions in mind when evaluating staging: Was it obvious that the movement was planned? Was there an appropriate use of the performance space? Were props used appropriately where applicable?
- \* NOTE: **Performers may no longer stand on tables or chairs.** Please check your scripts and make adjustments so that your students are in compliance with this rule.
- \* Sound effects and singing are permitted for all events.

## INDIVIDUAL LIMITATIONS

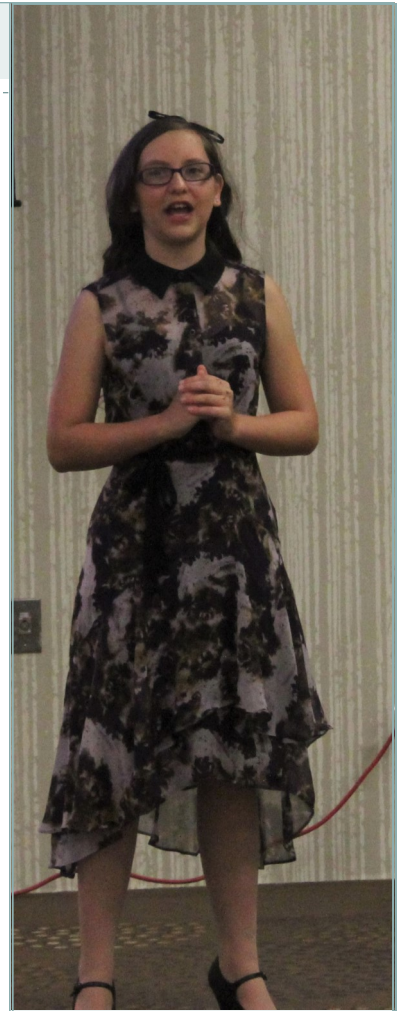
Please make sure that you review the individual limitations prior to preparing students for contest.

Qualified students are eligible to participate in the IESA State Speech Contest in any combination of up to three events. Students may participate in multiple performances in the same scripted event within the maximum. Improvisational events will only be allowed one entry in the same event per performer. To be eligible to participate in Team Improv, students must also perform a scripted event.

The change now allows students to perform in two or three of the same scripted event—i.e. two regular duets, two solo acting, etc.

Students may not perform the same selection in more than one IESA contest.

Please keep in mind that this only applies to scripted events and does not apply to non-scripted events. For example, a student could not perform in two Improv duets.



## SPEECH DATES

- Entry Deadline: Sept. 27
- Final Entry Deadline: Oct. 7
- Participant information must be submitted by Oct. 12
- State Contest Dates: Oct. 29, 30, Nov. 5, 6, 12, 13



**HELP! I DON'T THINK MY STUDENT'S RATING IS CORRECT.**

First, review your adjudication forms prior to leaving your contest. Once you leave contest, it will be extremely difficult for a review to take place.

Second, find the contest manager for your contest. The contest manager will be able to assist in making interpretations and rulings.

Finally, be prepared. Make sure you have reviewed the adjudication form for your student and the Speech Terms & Conditions. Provide the judge representative with your points and with the name and/or room number of the judge.

You should have your conversation with the judge as soon as you have a question. Do not leave the contest before reviewing your adjudication forms for accuracy.

## TEAM IMPROV INFORMATION FOR 21-22

Reminders for Team Improv.

- Groups for Team Improv are comprised between 4 to 6 performers.
- Groups may use a maximum of five chairs for the event.
- Game topics supplied by the IESA to the judges. The judges will select three games to be played from the list. Games and descriptions are available online.
- For each game performed by a team, the judge will select the students who will participate.
- The time limit for the event is a

maximum of 12 minutes. Time will be controlled by the judge.

- If you are hosting contest, please make sure you are assigning Team Improv events to judges who are comfortable evaluating the event.
- Games for 2021: Hitchhiker, Freeze/Switch, Changing Channels, Line Talk, Movie Critics.

(Game information has been updated. Please review prior to rehearsal.)

**To be eligible for Team Improv, students must also perform a scripted event. This only applies to Team Improv!!!!**

## IMPORTANT SPEECH DATES

Please keep these dates in mind as you prepare for contest season.

**September 27– Initial Entry Deadline for Speech Entries**

-Entries must be submitted on-line and postmarked by this date.

**October 7– Final Entry Deadline for Speech Entries**

-No fees will be accepted postmarked after the Oct. 7 deadline.

**October 1– Start including your speech participants in your school's weekly grade check.**

**October 12– Participant Information due on-line**

-All information regarding performances is due and must be entered on-line.

## LEGAL PARTICIPANT CHANGES

It is the week of contest you find out that one of your students who was a part of a small group is going to be out of town. **What do you do?**

First, decide whether you want the group to be able to perform legally, be rated, and receive awards OR if you just want the group to perform for a judge and audience WITH NO RATING.

If they are going to perform legally, you must find a legal replacement for the group. This means someone who is not performing the same selection as this group and who will not exceed the three event maximum. If your group is already meeting the group participant requirements, you could reconfigure the speaking parts and still be eligible for a rating.

**Keep in mind to be eligible for awards: You cannot have someone read the missing part; nor, can you insert a student who is not eligible to perform.**

If you find yourself in this position, please call the IESA Office and we can discuss all of the possible options.



## PROPS AND INTRODUCTIONS

**PROPS:** Please make sure that you review the allowable props for all events. The IESA Board of Directors has imposed a restriction on the use of chairs and tables. Students may not stand on tables or chairs during performances. Make adjustments to your scripts to be in compliance with this rule.

Parts of the body are not considered props. A student could touch their hair during the course of a performance and not be in violation of the rules.

It is possible that clothes or jewelry could be considered a prop. If the clothes or jewelry are referred to in the presentation or representative of the piece, they would be considered costume/props and the performance would be penalized accordingly.

**REMINDER:** Contestants are allowed to interact with audience members without this being considered the introduction of a prop. This would include dialogue and/or physical contact.

Sound effects and singing are permitted for all events.

**INTRODUCTION:** The judge will begin timing with the first spoken word—including the title, author, and introduction- or stage movement. An introduction is not required; but, if it is included by the performers, it will be added to the total performance time. If an introduction is not given and the judge asks for the performers names, this will not be included in the total time.

Please keep this in mind when preparing your students for contest.

## JUDGING PHILOSOPHY

The judging philosophy has been restructured to the following:

“The Speech Advisory Committee continually evaluates the consistency of ratings throughout the state every year. A guideline for judges to keep in mind as they evaluate performances is that a solid performance that meets the adjudication criteria for the event deserves a Division I rating. It is important to appropriately recognize those performances that are meeting the published adjudication criteria.”

**It is important that coaches rate their judges after contest and submit the ratings to the IESA Office. This helps keep judging consistent.**

## COMMON Q&A'S

- Q.** May an audience member have a copy of a performer's script in sight during a performance?
- A.** Yes; however, if the performer is provided an audible prompt or the judge believes that the performer was provided assistance, the performance may be lowered a rating.
- Q.** May a student or a coach ask the judge not to time the introduction?
- A.** No. Contestants shall be timed from the first spoken word or stage movement. Introductions are not required, but if they are presented they will be timed.
- Q.** May a performer stand on a table or a chair?
- A.** No.



## MORE COMMON Q&A'S

- Q. I have a student who would like to enter Team Improv. Is this student eligible for the event?
- A. The student must be entered in and perform a scripted event in order to be eligible. To be eligible for Team Improv, the student would have to enter and perform in one of the following events: Solo Acting, Poetry, Original Script, Storytelling, Duet Acting, Original Script Duet, Small Group Acting, or Chorale Reading. **NOTE: THIS ONLY APPLIES TO TEAM IMPROV.**
- Q. May only one individual from a duet be rated by a judge?
- A. No. The entire entry must be rated. The contest host may allow an entry to perform but not receive a rating from the judge.
- Q. I have a student who has already performed in an Improv Duet. Can he serve as a partner in another Improv Duet?
- A. No. Improvisational events are only allowed one entry in the same event per performer.

## POINTS OF EMPHASIS FOR 2021-22

### **Annual Fine Art Recognition Program!**

Nominations will again be taken for the recognition of a veteran and new speech coach. Nomination materials will be available in the Fall of 2021. Selection of the award winners will be in the Spring of 2022 and recognition of the winners will occur in the Fall of 2022. Those eligible for The Distinguished Service Award must have been coaching for over 8 years, and actively involved in IESA Speech. Those eligible for The Class Act Award must have been coaching for 3-8 years IESA Speech. Please take your time this fall to nominate coaches for this award.

### **Fall Workshop**

There will be no workshop in the fall of 2021.

### **Comments from Judges**

Please remind your students that after their performance oral comments may or may not be given by their judge. Judges are encouraged, but not required, to provide oral feedback after a performance. Please make sure your students understand this is the personal preference of the judge and not a reflection on their performance.

### **Academic Eligibility of Participants**

Please make sure that you review the eligibility requirements for your participants. As a reminder, students must be achieving passing work in all subjects in order to be eligible to participate in contest. Passing work must be checked weekly to govern eligibility for the following Monday through Saturday.

### **General Terms and Conditions Reminders**

- \*Students may no longer stand on chairs or tables during their performances.**
- \*There was a decrease to the number of selections that must be performed within a Chorale event. Students may now perform one or more selections within the time frame.
- \*Performances receiving a Division I rating may be selected for the Judge's Choice award.
- \*Please make sure that you are reviewing your scripts to make sure that they are in compliance with the event requirements– time, props, characters, etc.
- \*Coaches should remind students to keep their Improvisational content appropriate for performance.
- \*Please review the Rating Philosophy.
- \*Participating schools should communicate to their hosts as early as possible changes to their entries or open /empty spots.
- \*If more than two lines/prompts are given, the judge will consider this to be excessive prompting and the performance will be lowered by one rating. The judge will consider lines/prompts provided by performance partners, teammates, coaches (head, assistant, and/or volunteer) and audience members toward the total.**